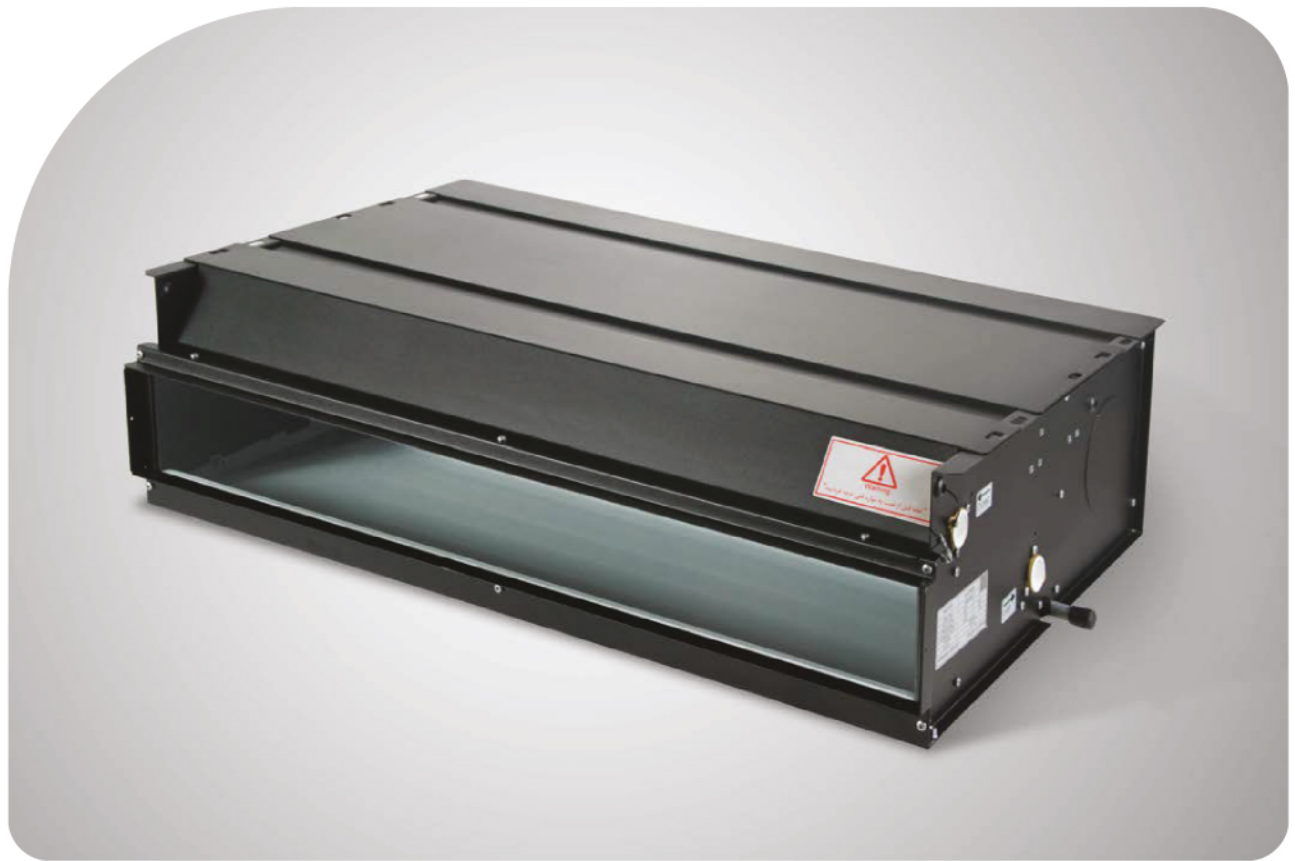




کاتالوگ فنی

فن کوئل های سقفی توکار
Ceiling Concealed Fan Coil



COIL:

- The coil can have 2 or 3 or 4 rows, with copper tubes mechanically bonded into corrugated aluminum fin.
- Optional copper fin or hydrophilic blue or Gold fin is available.
- Water inlet / outlet connections are ¾-inch female pipe thread (BT).
- Coil assembly is tested over 20kg/cm³ 2psig).
- A manual air vent is fitted with a drain line to the drain pan to avoid any water drips when venting.
- A water drain is located at the bottom of the coil header.

FILTER:

Regenerable synthetic fiber enclosed with wire mesh protection. The filter is easily removable cleaning and maintenance. Filter efficiency G1, G2 and G3 (MERV 5-1)

Fan and Motor:

- Standard ABS fan wheel with optional galvanized steel fan wheel for low noise application.
 - The motor comes with hermetic aluminum alloy casing and permanently lubricated ball bearing.
 - The motor has grade B class insulation; with built-in thermal cutout.
- AC-motor – V1/ 230Ph/50-60Hz single phase, 6 , 5 , 3 or 7 speeds are available depending on model, 3 are wired to the fan speed switch

CASING:

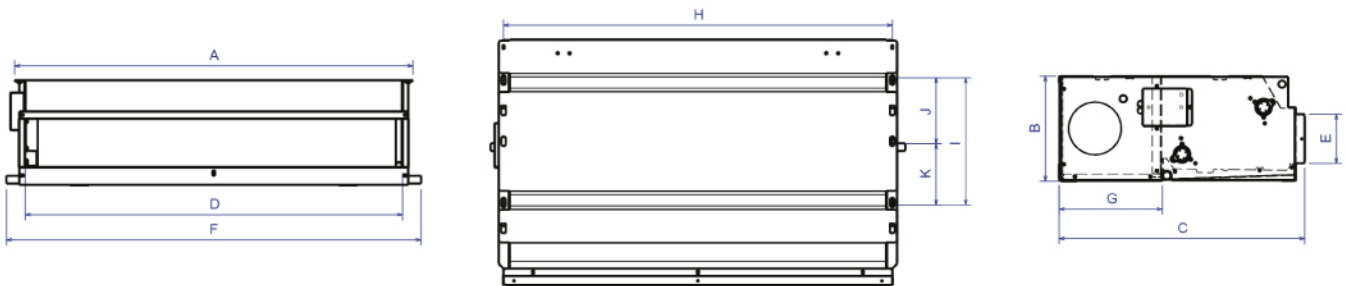
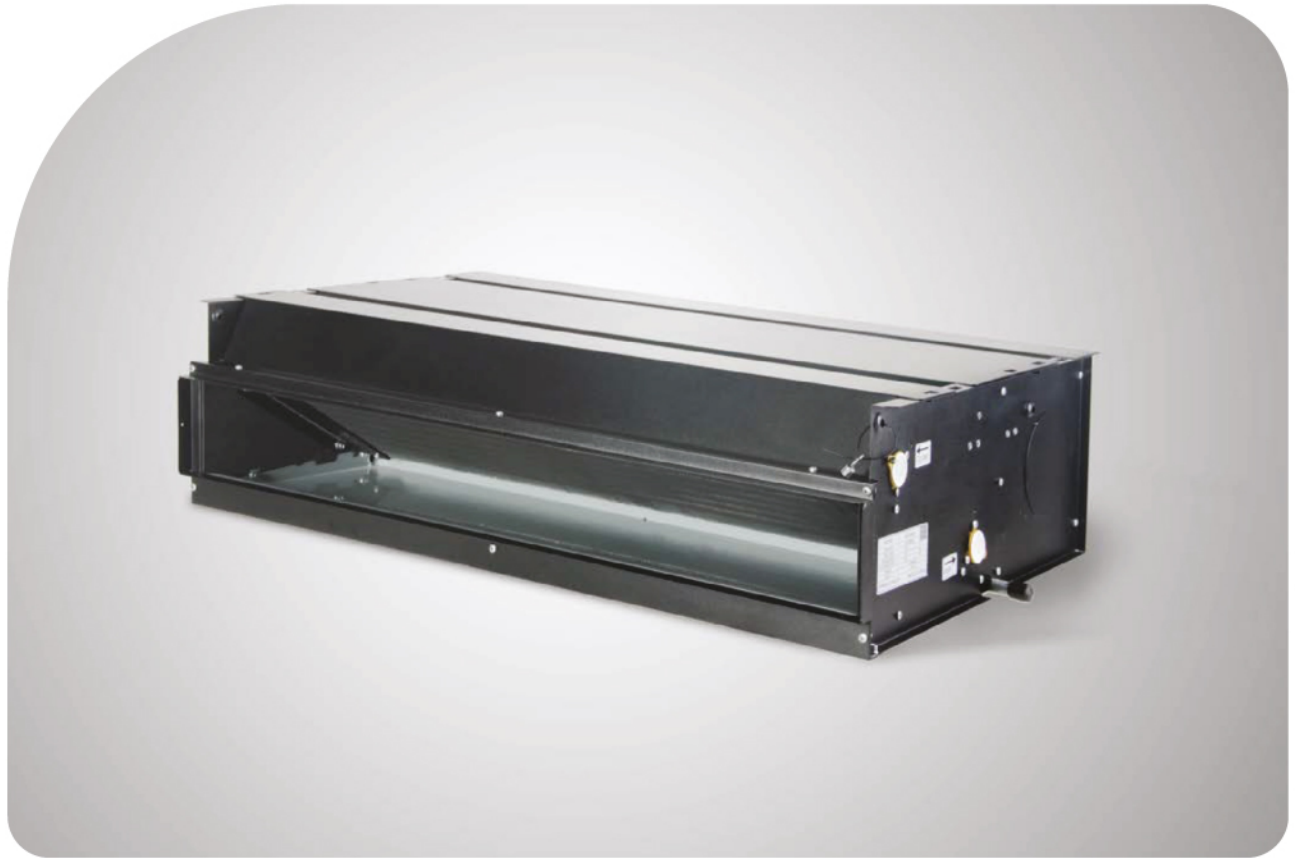
- Frame construction made of galvanised. steel,
- Casing epoxy powder coated RAL 9005 is available on request
- Fresh air inlet



Model		AFC20B	AFC30B	AFC40B	AFC60B	AFC80B
Rated Air Flow Volume (CFM)	High	200	300	400	600	800
	Medium	140	210	280	420	560
	Low	90	135	180	310	380
Cooling Capacity (Bthu)	High	6341	8973	12450	16500	24182
	Medium	5181	7395	10241	13820	20594
	Low	3870	5622	7623	11679	16871
Heating Capacity (Bthu)	High	16972	24229	32671	44967	56000
Fan	Model	Standard ABS fan wheel with optional galvanized steel fan Model wheel for low noise applicate				
	Quantity	1				
Motor	Model	Hermetic aluminum shell in 7 speed				
	Insulation	Level B				
	Quantity	1				
Power Supply (V/PH/HZ)	220V/1ph/50Hz					
Evaporator	Coil Model	Copper tubes mechanically bonded into corrugated aluminum fin				
	Working Pressure	$\geq 1.6\text{mPa}$				
	Water Running Pipe Diameter	RC3/4"(DN20)inner thread taper pipe				
	Condensing water pipe diameter	RC3/4"(DN20)inner thread taper pipe				
	Rows quantity	2	2	2	2	2
	Water Flow volume (GPM)	2	2.5	3	3.5	4.5
	Water PD (FT H2O)	2.1	3.7	6.22	9	17.1

Remark:

1: Refrigeration test conditions: inlet dry bulb 27 C and wet bulb 19.5 C. Water temperature 7 C and water temperature difference is 5 C; Heating test conditions inlet air dry bulb 21 C and inlet hot water 60 C.



Model	A	B	C	D	E	F	G	H	I	J	K
AFC 20 B	645	222	520	601	104	680	218	625	270	140	140
AFC 30 B	745	222	520	701	104	780	218	725	270	140	140
AFC 40 B	845	222	520	801	104	880	218	825	270	140	140
AFC 60 B	945	222	520	901	104	980	218	925	270	140	140
AFC 80 B	1195	222	520	1151	104	1230	218	1175	270	140	140
AFC 100 B	1445	222	520	1401	104	1480	218	1425	270	140	140

Size unit : (m)



Cooling performance Data

Model	GPM	PD(ft)	TH(BthU)	SH(BthU)
AFC 20 B	1	0.84	5150	3518
	1.5	1.7	5894	3795
	2	2.9	6341	3966
AFC 30 B	1.5	2	7654	5169
	2	3.2	8446	5464
	2.5	4.9	8973	5665
AFC 40 B	2	4.1	11000	7204
	2.5	6.1	11815	7524
	3	8.8	12410	7754
AFC 60 B	2.5	6.7	14737	9923
	3	9.2	15623	10252
	3.5	12	16500	10578
AFC 80 B	3	11.2	19245	13063
	3.5	14.8	20407	13868
	4	18.8	21407	13868
	4.5	23.2	22182	14161

2rows

DB:80°F | WB:67°F | End fluid:44.6°F | Altitude:4000 (ft)

Model	GPM	PD(ft)	TH(BthU)	SH(BthU)
AFC 20 B	1	0.84	5700	3721
	1.5	1.7	6564	4053
	2	2.9	7089	4262
AFC 30 B	1.5	2	8539	5500
	2	3.2	9425	5841
	2.5	4.9	10074	6098
AFC 40 B	2	4.1	12285	7706
	2.5	6.1	13176	8055
	3	8.8	13848	8325
AFC 60 B	2.5	6.7	16407	10549
	3	9.2	17536	11000
	3.5	12	18366	11310
AFC 80 B	3	11.2	21600	13941
	3.5	14.8	22855	14421
	4	18.8	23874	14818
	4.5	23.2	24742	15160

2rows

DB:80°F | WB:67°F | End fluid:41°F | Altitude:4000 (ft)

Model	GPM	PD(ft)	TH(BthU)	SH(BthU)
AFC 20 B	1	0.42	5991	4084
	1.5	0.86	6998	4460
	2	1.4	7534	4667
AFC 30 B	1.5	1	9071	6096
	2	1.65	10000	6448
	2.5	2.5	10890	6785
AFC 40 B	2	2	12723	8383
	2.5	3.05	13989	8862
	3	4.09	14755	9159
AFC 60 B	2.5	3.33	17135	11661
	3	4.4	18472	12155
	3.5	5.9	19541	12557
AFC 80 B	3	5.4	22657	15462
	3.5	7.2	24066	15981
	4	9.2	25240	16420
	4.5	11.3	26384	16853

3rows

DB:80°F | WB:67°F | End fluid:41°F | Altitude:4000 (ft)

Model	GPM	PD(ft)	TH(BthU)	SH(BthU)
AFC 20 B	1	0.42	668	4343
	1.5	0.86	7924	4821
	2	1.4	8339	5010
AFC 30 B	1.5	1	10090	6477
	2	1.65	11302	6946
	2.5	2.5	12085	7259
AFC 40 B	2	2	14234	8957
	2.5	3.05	15517	9459
	3	4.09	16468	9841
AFC 60 B	2.5	3.33	19151	12410
	3	4.4	20727	13012
	3.5	5.9	21866	13456
AFC 80 B	3	5.4	25202	16400
	3.5	7.2	26815	17018
	4	9.2	28305	17595
	4.5	11.03	29511	18068

3rows

DB:80°F | WB:67°F | End fluid:44.6°F | Altitude:4000 (ft)

Heating performance Data

Model	GPM	PD(ft)	Total Heating capa.(BthU)70c	PD(ft)	Total Heating capa.(BthU)60c
AFC 20 B	1	0.63	17517	0.65	15600
	1.5	1.3	18488	1.35	16500
	2	2.1	19000	2.26	16972
AFC 30 B	1.5	1.48	25557	1.53	22788
	2	2.47	26524	2.57	23665
	2.5	3.7	27134	3.83	24229
AFC 40 B	2	3	34898	3.17	31148
	2.5	4.75	35985	4.73	32056
	3	6.22	36567	6.45	32671
AFC 60 B	2.5	5	48183	5.2	42950
	3	6.82	49443	7.07	44107
	3.5	9	50373	9.3	44967
AFC 80 B	3	8.32	63500	8.63	56654
	3.5	11	65037	11.3	58039
	4	13.9	66200	14.4	59100
	4.5	17.1	67120	17.78	60000

2rows

Model	GPM	PD(ft)	Total Heating capa.(BthU)70c	PD(ft)	Total Heating capa.(BthU)60c
AFC 20 B	1	0.32	20788	0.32	18543
	1.5	0.65	21941	1.67	19613
	2	1.1	22533	1.13	20168
AFC 30 B	1.5	0.74	30576	0.77	27300
	2	1.24	31776	1.28	28404
	2.5	1.85	32500	1.91	29075
AFC 40 B	2	1.52	41749	1.58	37318
	2.5	2.28	42941	2.36	38419
	3	3.03	43736	3.14	39150
AFC 60 B	2.5	2.5	58261	2.58	52028
	3	3.33	59882	3.45	53524
	3.5	4.38	61059	4.51	54593
AFC 80 B	3	4.06	76877	4.21	68679
	3.5	5.34	78836	5.54	70472
	4	6.78	80303	7.03	71809
	4.5	8.37	81466	8.67	72883

3rows