

# Hisense

life reimagined

## Middle East & Africa High Ambient 50Hz

Light commercial air conditioner line up







# Specification

**Ducted Split R410A  
Cassette R22  
Floor Standing R22**

# R410A On/Off Series (50Hz)

## Duct Type

### Optional Static Pressure

18k: optional 10Pa & 30Pa static pressure, each unit can be installed in two ways

10Pa: Straight Air Flow without external duct

30Pa: External duct placed on air discharge

Two installation methods by changing wiring connection.

Note: Default settings is 10pa by factory.



Front air flow,  
bottom air intake

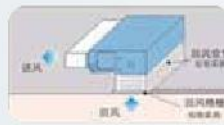


Front air flow,  
back air intake

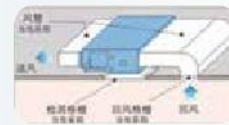
### 2 Ways of Air Intake

Advantages: If the distance between unit and wall is limited then you can choose bottom air intake by tearing down the bottom board of the unit, it will be much easier and more flexible.

Note: The noise of bottom air intake is 5dB higher than back air intake, so we recommend to use the back air intake.

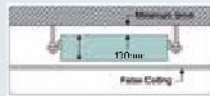


Bottom air intake



Back air intake

### Slim Design



With a height of 190mm, it can be easily installed inside low ceiling residential buildings.

### Built-in Drain Pan



Built-in Drain Pan



Outside Drain Pan

Disadvantage of outside drain pan: it easily can attract dust and bacteria, which may cause leakage in long term use. Hisense built-in drain pan design: will be clean and durable.

### Water Level Switch & Water Pump

If water pump may experience issue that causes water level to rise to a certain level, the unit will turn off and release the water.



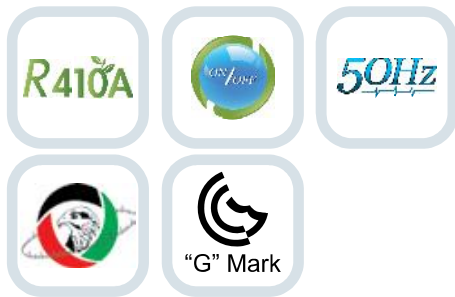
Water Pump is optional for duct type unit

### Safety Protection

Ensure the compressor operate in the safe range, and prevent damage caused by refrigerant leakage.



# Ducted Split



Set Model No.	AUD18-CTX4SZLL	AUD24-CTX4SALL	AUD30-CTX4SAHH	AUD36-CTX4STHH	AUD42-CTX6SPHH	AUD48-CTX6SPHH	AUD60-CTX6SPHH	
Indoor model	AUD18-CX4SLL	AUD24-CX4SLL	AUD30-CX4SHH	AUD36-CX4SHH	AUD42-CX4SHH	AUD48-CX4SHH	AUD60-CX4SHH	
Outdoor model	AUW18-CT4SZ	AUW24-CT4SA	AUW30-CT4SA	AUW36-CT4ST	AUW42-CT6SP	AUW48-CT6SP	AUW60-CT6SP	
<b>Performance</b>								
Capacity	Btu/h	18000	24000	28320	34100	42650	47000	51500
Power Input	W	1500	2000	2300	2845	3560	3920	4300
Indoor Air Flow (Hi/Med/Lo)	m3/h	1250/1050/995	1350/1200/900	1834/1600/1200	2040/1800/1500	2200/2000/1800	2300/2010/1950	2550/2300/2050
EER	W/W	3.51	3.53	3.61	3.51	3.51	3.51	3.51
ESP	Pa	35	35	50	50	60	60	60
Power supply	V-ph-Hz	220-240-1-50	220-240-1-50	220-240-1-50	220-240-1-50	380-415-3-50	380-415-3-50	380-415-3-50
Indoor noise level	dB(A)	40/38/36	44/42/39	39/38/35	43/41/38	44/40/38	47/44/42	47/44/42
Outdoor noise level	dB(A)	55	55	55	62	56	60	60
Refrigerant Type	R410A							
Compressor Type	Rotary	Rotary	Rotary	Rotary	Rotary	Scrool	Scrool	Scrool
Expansion Device	Throttle Valve	Throttle Valve	Throttle Valve	Throttle Valve	Capillary	Capillary	Capillary	Capillary
Evaporator - Condenser Type	Cooper & Aluminium Fin							
<b>Indoor Units Dimensions</b>								
Dimension (WxDxH)	mm	900×270×720	900×270×720	1300×800×350	1300×800×350	1300×800×350	1300×800×350	1300×800×350
Packing(WxDxH)	mm	1170×870×340	1170×870×340	1550×940×410	1550×940×410	1550×940×410	1550×940×410	1550×940×410
Net/Gross weight	kg	0.9	30/35	50/55	51/60	51/60	51/60	51/60
<b>Outdoor units Dimensions</b>								
Dimension (WxDxH)	mm	900×640×300	950×840×340	950×840×340	950×340×1050	950×340×1386	950×340×1386	950×340×1386
Packing(WxDxH)	mm	1050×700×400	1110×460×910	1110×460×910	1110×460×1200	1110×460×1530	1110×460×1530	1110×460×1530
Net/Gross weight	kg	50/54	60/65	60/65	83/86	108/112	106/120	118/132
<b>Refrigerant piping</b>								
Liquid side/ Gas side	mm(inch)	(1/4"/1/2")	(3/8"/5/8")	(3/8"/3/4")	(3/8"/3/4")	(3/8"/3/4")	(3/8"/3/4")	(3/8"/3/4")

## Notes :

1. Nominal cooling capacity is based on 95°F (35°C) ambient and 80.6°F DB / 66.2°F WB (27°C DB / 19°C WB) indoor air temperature.

# R22 On/Off Series (50Hz)

## Cassette Type

### Low Noise Fan



18k

New design of the vortex fan



24k/36k/48k/60k

New vortex fan optimises air tunnel, lower noise and smoother air flow.

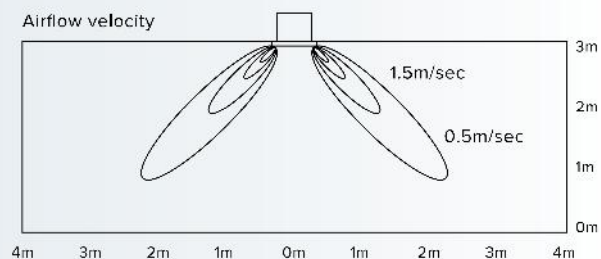
### DC Fan Motor



- 24k/36k/48k/60k: Using the DC Fan Motor, high efficiency and energy saving
- Low Noise: AC motors will produce low frequency noise during this operation, but DC motor won't let this happen.
- Stable operation

### Temperature Compensation of Cassette

For Cassette type heating mode, people do not always feel warm enough because the hot air stay at the top level. Hisense Cassette bring 4 level temperature compensation setting by DIP switch. The unit will increase the fan speed and air circulation to create a comfortable environment for people.



# Cassette



18000 Btu/h

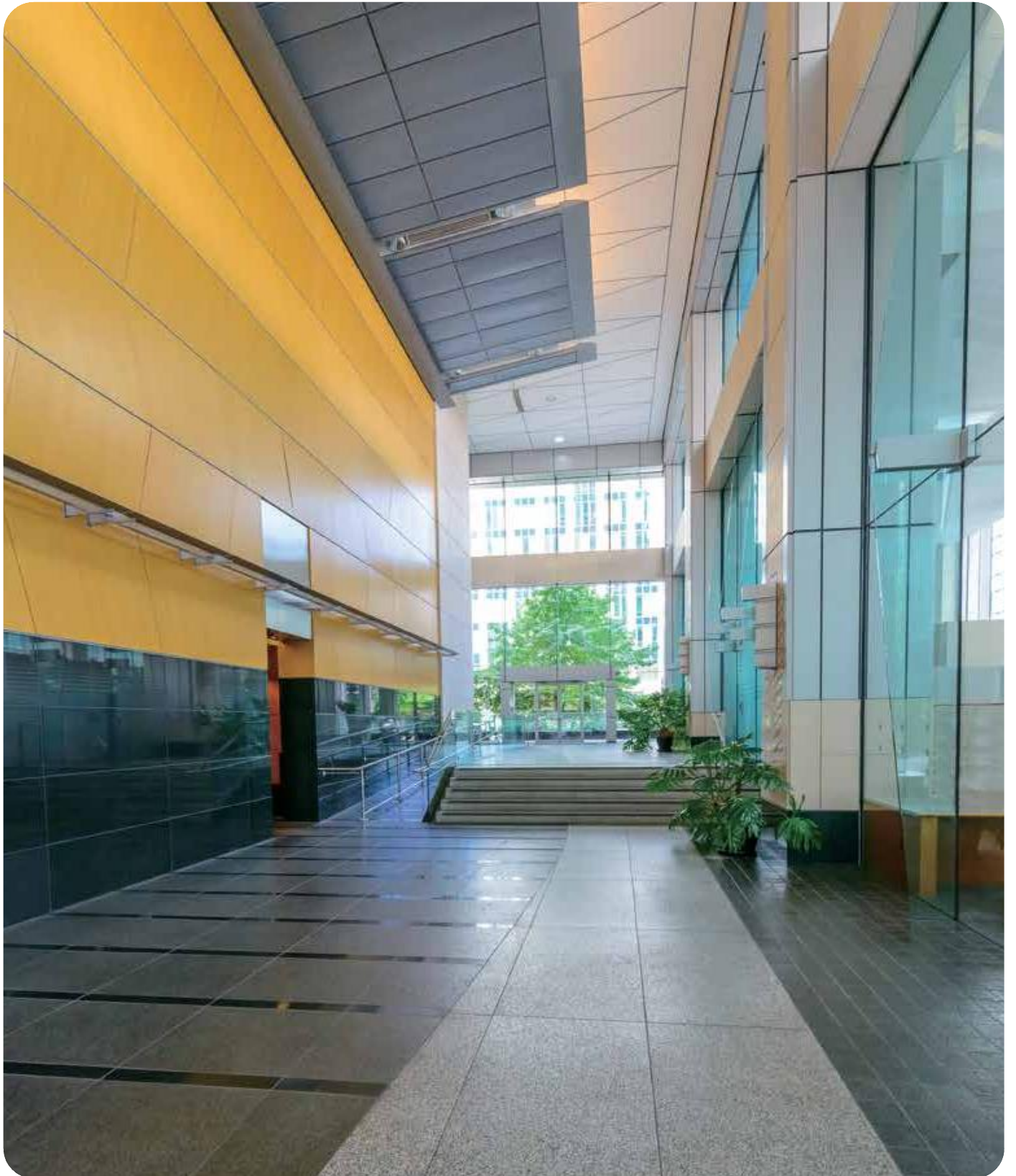
24000 Btu/h  
36000 Btu/h

48000 Btu/h  
60000 Btu/h

Mode No:			AUC-18HTR4FUAA1	AUC-24HTR4FZGA1	AUC-36HTR4FAGA	AUC-48HTR6FEHA	AUC-60HTR6FPHA
Indoor Model:			AUC-18HR4FAA	AUC-24HR4FGA	AUC-36HR4FGA	AUC-48HR4FHA	AUC-60HR4FHA
Outdoor Model:			AUW-18HT4FU1	AUW-24HT4FZ1	AUW-36HT4FA1	AUW-48HT6FE	AUW-60HT6FP
<b>Performance</b>							
Cooling Capacity (W)			5275	7100	10000	14000	17500
Heating Capacity (W)			5860	8000	11000	15000	19000
Rated Input (w)	Cooling		1870	2520	3320	4360	5450
	Heating		1820	2340	3225	4150	5260
Air Circulation (m <sup>3</sup> /h)			850	1250	1800	2000	2000
EER for Cooling (w/w)			2.81	2.81	3.01	3.21	3.21
COP for Heating (w/w)			3.21	3.42	3.41	3.61	3.61
<b>Power Supply</b>							
Volt/Phase/Hz			220-240V~/1P/50Hz	220-240V~/1P/50Hz	220-240V~/1P/50Hz	220-240V~/1P/50Hz	220-240V~/1P/50Hz
Rated Current (A)	Cooling		8.2	13.2	15.8	7.3	9.0
	Heating		8.0	11.8	14.5	7.0	9.5
Noise Level (dB (A))	Indoor Unit	H/M/L	46/42/39	43/38/30	50/47/44	50/45/40	50/45/40
Noise Level (dB (A))	Outdoor Unit	High	55	54	55	53	54
<b>Piping</b>							
Diameter(Liquid)	Inch		1/4	3/8	3/8	3/8	3/8
Diameter(Gas)	Inch		1/2	5/8	5/8	3/4	3/4
Max Length	m		20	30	30	50	50
Max Height	m		15	15	20	30	30
<b>Other</b>							
Dimensions WxHxD (mm)	Panel		650 x 30 x 650	950 x 37 x 950	950 x 37 x 950	950 x 37 x 950	950 x 37 x 950
	Indoor Unit		650 x 270 x 570	840 x 248 x 840	840 x 248 x 840	840 x 298 x 840	840 x 298 x 840
Net Weight (Kg)	Panel		2.4	6	6	6	6
	Indoor Unit		20	28	30	33	33
Packing Dimensions WxHxD (mm)	Panel		730 x 130 x 730	990 x 115 x 1010	990 x 115 x 1010	1010 x 115 x 990	1010 x 115 x 990
	Indoor Unit		770 x 310 x 750	930 x 290 x 930	930 x 290 x 930	930 x 340 x 930	930 x 340 x 930
Gross Weight (Kg)	Panel		5	10	10	10	10
	Indoor Unit		27	34	36	39	39
Loading Capacity (20/40/40' HC)			56/115/130	43/90/104	32/66/77	26/54/67	23/48/53

Remarks: 1. The above design and specifications are subject to change without prior notice for product improvement.  
2. The values given in the table for noise level reflect the levels in anechoic chamber.

## R22 On/Off Series (50Hz)





# Floor Standing(T3 50Hz)

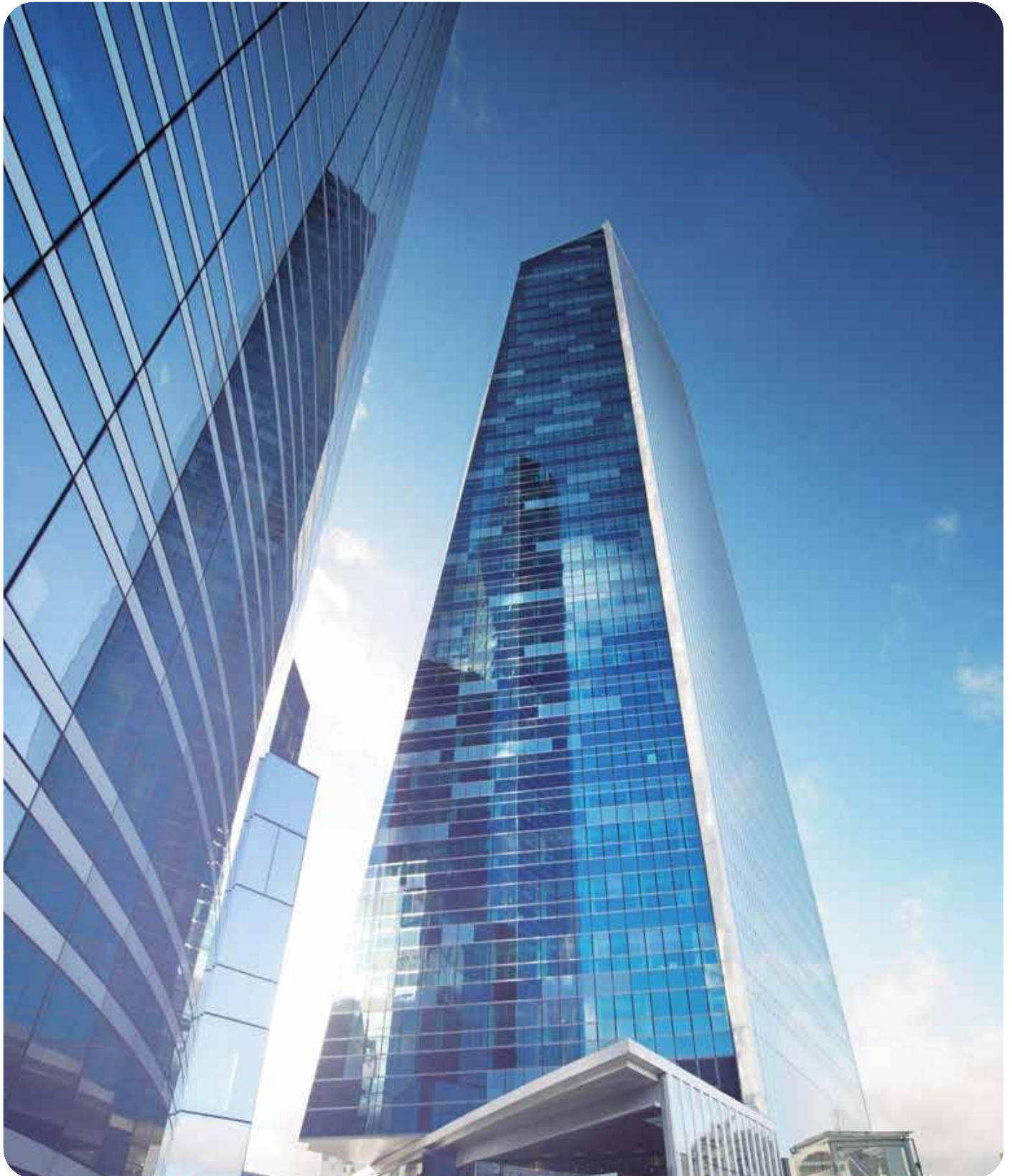


18000 Btu/h 24000 Btu/h  
36000 Btu/h 48000 Btu/h 60000 Btu/h

Model No. Indoor Unit Outdoor Unit		AUF-18HTR4FUC AUF-18HR4FC AUW-18HT4FU	AUF-24HTR4FZC AUF-24HTR4FC AUW-24HT4FZ	AUF-36HTR4FAM AUF-36HR4FM AUW-36HT4FA	AUF-48HTR6FEM AUF-48HR4FM AUW-48HT6FE	AUF-60HTR6FPM AUF-60HR4FM AUW-60HT6FP
Type		Heat pump	Heat pump	Heat pump	Heat pump	Heat pump
Ratings						
Cooling Capacity	W	5275	7034	10000	14000	17500
Heating Capacity	W	5860	7913	11000	15000	19000
Rated Input-Cooling	W	1877	2600	3550	4360	5450
Rated Input-Heating	W	1826	2720	3225	4150	5260
Moisture Removal	L/H.r	1.5	2.5	3.5	5	6
Air Circulation	CMH Max	850	1200	1600	2000	2000
EER for Cooling	W/W	2.81	2.71	2.81	3.21	3.21
COP for Heating	W/W	3.21	2.91	3.41	3.61	3.61
Refrigerant		R22	R22	R22	R22	R22
Indoor Unit Noise Level	Super(dB (A))	—	—	51	52	55
	High(dB (A))	45	48	49	50	54
	Medium(dB (A))	41	45	45	49	52
	Low(dB (A))	39	41	42	48	50
Outdoor Unit Noise Level	dB (A)	57	60	58	57	62
Power Supply						
Voltage, Frequency, Phase		220-240V~/1Ph/50Hz	220-240V~/1Ph/50Hz	220-240V~/1Ph/50Hz	380~415V~/3Ph/50Hz	380~415V~/3Ph/50Hz
Rated Current	Cooling(Amp.)	8.2	12.2	15.8	7.3	9.0
	Heating(Amp.)	8	12.7	14.5	7.0	9.5
LRA	A	49	72	76	66	70
Connecting Pipe Diameter						
Liquid Pipe	inch	1/4	3/8	3/8	3/8	3/8
Gas Pipe	inch	1/2	5/8	5/8	3/4	3/4
Other						
Net Dimensions	WxHxD (mm)					
	Indoor Unit	500 x 1760 x 280	500 x 1760 x 280	580 x 1870 x 380	580 x 1870 x 380	580 x 1870 x 380
	Outdoor Unit	800 x 550 x 260	900 x 640 x 300	950 x 840 x 340	950 x 1050 x 340	950 x 1386 x 340
Net Weight (Kg)	Indoor Unit	36.5	38	48	52	52
	Outdoor Unit	39	50	69	100	115
Packing Dimensions WxHxD (mm)	Indoor Unit	610 x 410 x 1890	610 x 410 x 1890	690 x 2000 x 480	690 x 2000 x 480	690 x 2000 x 480
	Outdoor Unit	930 x 620 x 360	1060 x 700 x 410	1110 x 980 x 460	1110 x 1200 x 460	1110 x 1530 x 460
Gross Weight (Kg)	Indoor Unit	44.5	46	60	63	63
	Outdoor Unit	43	56	77	108	120
Loading Capacity (20'/40'/40'HC)		42/85/100	33/76/80	24/50/52	21/44/52	19/39/43

Remarks: 1. The above design and specifications are subject to change without prior notice for product improvement.  
2. The values given in the table for noise level reflect the levels in anechoic chamber.

## R22 On/Off Series (50Hz)







Hisense



Global Corporate Partner of UNEP

## Introduction of Hisense

Founded in 1969 as a small radio factory in China, Hisense has grown into a multibillion dollar global conglomerate with a workforce of over 60,000 worldwide. Hisense is a world leading provider of flat panel TVs, household appliances, and mobile communications and is recognized as a global top 10 TV brand by large business intelligence and industry research institutions. Hisense is a household name in China and has been the country's market leader in flat-panel TVs for eight consecutive years beginning in 2004.

Hisense's many subsidiaries are in the consumer electronics, home appliance, mobile communications and information technology industries. With 19 production facilities and 6 R&D centers around the globe, its regional headquarters are located in North America, Europe, Australia, Africa and Southeast Asia. Hisense's products are sold in more than 130 countries with sales revenues reaching USD 11.3 billion in 2011. In addition, Hisense has strategic partnerships with trusted, global corporations, such as IBM, Hitachi, and Whirlpool, for the development and marketing of various products and services.

"Technology, Quality, Integrity, and Responsibility" are the four key elements of Hisense. Over the years, Hisense has developed energy-saving products that are more eco-friendly and has supported more than 2000 primary schools in undeveloped and disaster-impacted regions throughout China. Pursuing healthy operations, top quality and honesty have won the respect and loyalty of our business partners. Hisense will continue to do its best in contributing to the improvement of human life.

تم تأسيس شركة هايسنس في عام ١٩٦٩م حيث بدأت كمصنع صغير لصناعة الراديو، ثم تبع ذلك سلسلة من التطورات لتصبح هايسنس مجموعة عالمية يقدر رأس مالها بمليارات الدولارات، و يبلغ عدد موظفيها أكثر من ٦٠ ألف موظف يعملون في مختلف أنحاء العالم، وتعتبر هايسنس من الشركات الرائدة في مجال الأجهزة المنزلية والاتصالات المتقلة. كما تعتبر هايسنس من أفضل ١٠ ماركات علي مستوى العالم في صناعة التلفزيونات والشاشات المسطحة وتزعم هايسنس سوق الشاشات الصيني ٨ سنوات متوالية منذ عام ٢٠٠٤م.

ويندرج تحت هايسنس عدد من شركات فرعية تعمل في مجال الالكترونيات الاستهلاكية كالأجهزة المنزلية - الاتصالات المتقلة - صناعة تكنولوجية المعلومات.

وقد اقامت الشركة ١٩ مصنعا إنتاجيا بالإضافة إلي ٦ مراكز أبحاث في مختلف أرجاء العالم، وتتخذ مقرا إقليميا لها في كل من : أمريكا الشمالية اوروبا - استراليا - فرنسا - جنوب شرق آسيا. وتباع منتجات هايسنس في أكثر من ١٣٠ دولة حيث بلغ مبيعاتها لعام ٢٠١١م ما يقارب ١.٣ مليار دولار كما تتمتع هايسنس بعلاقة جيدة مع شركاء استراتيجيين من أهمهم : آي بي ام - و يربول - هيتاشي حيث توفر هايسنس لهم و سائل التطوير والتسويق للمنتجات و الخدمات

(التكنولوجيا - الجودة - النزاهة - المسؤولية) وهي العناصر الأربعة الأساسية لهايسنس. وقد طورت الشركة في السنوات الأخيرة المنتجات الاقتصادية في استهلاك الطاقة والتي تحافظ على البيئة كما تقوم هايسنس بدعم و اعانة أكثر من ٢٠٠٠ مدرسة ابتدائية في مختلف أرجاء الصين. وقد نالت شركة هايسنس فائق الاحترام والثقة من شركائها التجاريين ويعود الفضل في ذلك إلى اهتمام الشركة بالمواصفات الصحية و متابعة الجودة والمصادقية المتناهية وسوف تواصل هايسنس بذل قصارى جهدها في تحسين حياة الألسان.



www.hisenseme.com

Note: Product design and specification subject to change without prior notice.

© 2013 Hisense Corporation. All rights reserved. Hisense and the Hisense logo are trademarks or registered trademarks of Hisense Group in China and/or other countries. All rights reserved. The Hisense Smart TV logo, Ultra HD High Definition logo, SMR logo and life reimagined logo are trademarks or registered trademarks of Hisense Electric Co. Ltd. in China are the property of their respective owners. All rights reserved.

### Dealer Information